

Handwritten cursive letter 'H' on a set of five horizontal lines (two blue outer lines and three light blue inner lines).

13

E

D

3

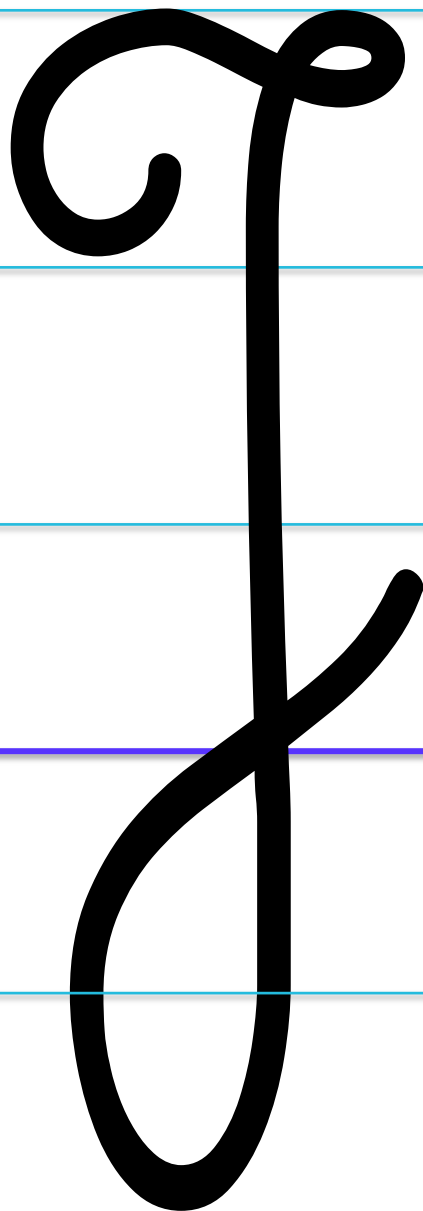
Ff

g

K



J



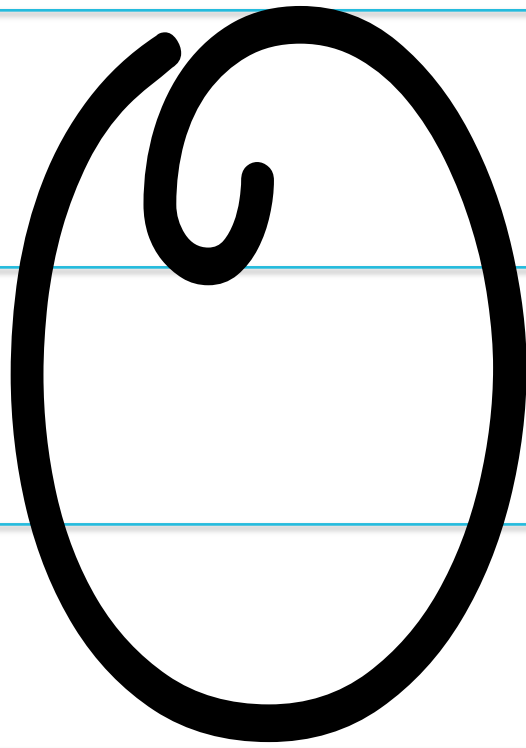
A large, black, cursive letter 'J' is centered on a set of horizontal lines. The letter is written in a thick, black, cursive style. It features a prominent loop at the top left, a small loop at the top right, a long vertical stem, and a large loop at the bottom. The letter is positioned between a blue line at the top and a blue line at the bottom, with several light blue lines in between.

Handwritten cursive letter 'K' on a set of five horizontal lines (two blue outer lines and three light blue inner lines).

g

M

M



J



9

R

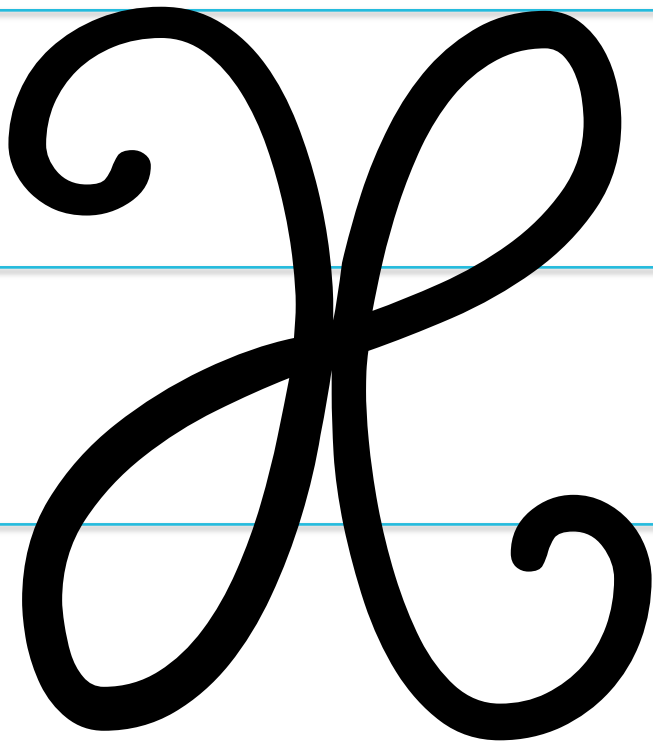
J

7

W

Handwritten cursive letters 'v' and 'y' on a set of five horizontal lines. The top and bottom lines are blue, and the three middle lines are light blue. The letter 'v' is on the left, and the letter 'y' is on the right. Both letters are drawn with a thick black stroke.

W





g

L